

Report to: **Scrutiny Committee for Children's Services**

Date: **19 September 2007**

Title of report: **Safeguarding Children – Local Safeguarding Children Board**

By: **Director of Children's Services**

Purpose of report: **To advise Scrutiny Committee members of the inter-agency arrangements in place to safeguard children in East Sussex**

RECOMMENDATION

The Scrutiny Committee is recommended to consider and comment on the annual report and business plan of the Safeguarding Board

1. Financial Appraisal

1.1 There are no financial implications. The report describes services that are already provided from within Children's Services' budgets.

2. Supporting Information

2.1 In 2003 Keeping Children Safe: The Government's Response to the Victoria Climbié Inquiry Report and Joint Chief Inspectors' Report Safeguarding Children 2003 advised that *'Reformed and strengthened Area Child Protection Committees, to be called Local Safeguarding Children Boards will be established on a statutory basis, with all the key agencies represented and having a duty to co-operate.'* The Children Act 2004 placed a duty on Local Authorities to set up Local Safeguarding Children Boards (LSCBs) and on key partners to take part; furthermore, it determined that *'LSCBs will co-ordinate and monitor member agencies' efforts to safeguard and promote the welfare of children, set policy and procedures, and establish local screening teams who will analyse the data with the aim of reducing local childhood death or injury. They will ensure proper investigation of child deaths so that similar future deaths can be prevented if possible'*. In 2006 the Government issued 'Working Together to Safeguard children'. Chapter 3 provided detailed guidance regarding the organisation and structure of the LSCB and the functions it would provide. Working Together 2006 defined the role of Members with regard to the LSCBs as follows: *'Local Authority Elected Members and non-executive directors of other board partners should not be members of a LSCB. Their role, through their membership of governance bodies such as the cabinet of the local authority or a scrutiny committee or a governance board, is to hold their organisation and its officers to account for their contribution to the effective functioning of the LSCB'*. It was, therefore, agreed that the annual report and business plan of the LSCB should be reported to the Children's Services Scrutiny Committee in order to enable that accountability.

2.2 This report advises the Committee on the work undertaken by the East Sussex Local Safeguarding Children Board in 2006/07 and outlines the business plan for 2007/08. Attached as Appendix 1 is the draft annual report of the East Sussex Local Safeguarding Children Board. This includes a retrospective review of the work of the LSCB in 2006/07 as well as the business plan for 2007/08.

2.3 During 2006/07 the LSCB has had a high level of commitment from both individual representatives and the agencies they represent. This has been against a backdrop of significant change at a local and national level. In 2006 the LSCB developed an audit tool for all partners to audit and review their services against the standards in Section 11 of the Children Act 2004 which outline the minimum requirements for delivery of safe services to children. Returns from this audit have been received from nearly all member agencies and a report on the outcomes of the audit will be presented to the LSCB Board.

2.4 A key safeguarding issue is the safe recruitment of staff, together with effective arrangements in place for managing allegations of abuse by employees. Significant work has been undertaken during 2006/07 to strengthen these systems. The Local Authority appointed a Local Authority Designated Officer during 2006 who worked closely with schools and the Children's Services Authority to ensure that safe recruitment systems were in place and that allegations against staff were managed appropriately.

2.5 In 2006/07 no serious case reviews were undertaken by the LSCB. However, the Audit Group met twice as a Serious Case Review Panel and recommended to the LSCB Chair that Multi-Agency reviews were undertaken. These reviews were both completed during 2006/07 and their action plans will be reviewed in 2007/08.

2.6 During 2006 a child safety sub-group was established and a consultant recruited to review arrangements for child safety in the community. The findings of this review were presented to the May LSCB Board meeting and the child safety action plan will be incorporated into the business plan for 2007/08.

2.7 Barnardos has undertaken a review of inter-agency systems regarding young people at risk from prostitution, missing from home and involved in substance misuse across Sussex. This review will be presented to the Board in September 2007 with an action plan to respond to its key findings.

2.8 In 2006 the LSCB spent a significant time establishing systems for reviewing and investigating child deaths, in accordance with Government guidance. This involved consultation with a variety of professionals and organisations, such as the Coroner and registrars, and some analysis of data on child deaths within East Sussex. The Child Death Review Panel (CDRP) has been established and the first meeting took place in April 2007. East Sussex CDRP has been chosen to be one of 8 pilot panels that are being reviewed nationally to inform the development of panels across the country.

2.9 A major piece of work undertaken in 2006/07 was to review child protection policies and procedures to ensure that they meet the new requirements of Working Together 2006. The new Child Protection and Safeguarding procedures were published in October 2006. Briefings on the new procedures were held and over 1000 staff have been trained across agencies.

2.10 The annual report also includes a statistical report about the safeguarding services as well as details about the training provided in 2006/07 and the outline training plan for 2007/08. The business plan for 2007/08 includes a work programme that will ensure that the LSCB is able to fully develop child death overview reporting processes by 2008, whilst developing advocacy and community child safety provision but also maintaining core child protection services.

3. Conclusion and Reason for Recommendation

3.1 An effective Local Safeguarding Children Board is in place within East Sussex and the business plan for 2007/08 will meet the statutory requirements of the LSCB.

MATT DUNKLEY

Director of Children's Services

Contact Officer: Fiona Johnson, Head of Children's Safeguards and Quality Assurance
Tel: 01273 481289

Local Members: All

BACKGROUND DOCUMENTS

Keeping Children Safe: The Government's Response to the Victoria Climbié Inquiry Report and Joint Chief Inspectors' Report Safeguarding Children 2003

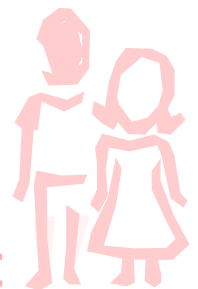
Working Together to Safeguard Children 2006

**East Sussex
Local Safeguarding Children Board**

**Annual Report &
Business Plan
2007-2008**



EAST SUSSEX
Local Safeguarding Children Board



**East Sussex LSCB Annual Report & Business Plan
2007-08**

Contents

Introduction Page 3

Statement of Values Page 4

Work of the ACPC 2006 – 2007 Page 6

LSCB Business Plan 2007 – 2008 Page 9

Appendices

1. Audit & Review annual statistical review
and CPR Analysis Graphs Page 13

2. Review of ACPC training programme 2005/6
and LSCB Training Plan for 2006/7 Page 19

3. LSCB Membership Page 32

The East Sussex Local Safeguarding Children Board (ESLSCB) is made up of representatives from the senior levels of all organisations in the area involved in protecting the welfare of children. Its purpose is to work co-operatively together to safeguard children within East Sussex. This requires proactive intervention where children are abused, targeted work with children at risk of harm and preventive work within the community to develop a safe environment for children. This report reflects back on the period April 2006-March 2007 and forward from April 2007 – March 2008.

Introduction

In February 2003 following the completion of Lord Laming's Inquiry into the death of Victoria Climbiè the government required Social Services, Police and Health agencies to audit and review their services to ensure that they met the standards identified in the Inquiry report. Within East Sussex the majority of these standards were met and those that required action were rapidly resolved.

In September 2003 the Government issued a green paper, 'Every Child Matters' and 'Keeping Children Safe' a response to the Victoria Climbiè Inquiry and the Joint Inspectors Report Safeguarding Children. In March 2004 a Children's Bill was published that marked the next stage in the reforms to children's services; this was accompanied by a further strategic document 'Every Child matters: Next Steps'. This was followed by the Children Act 2004 which places a duty on all relevant authorities to make arrangements to safeguard and promote the welfare of children this primarily deals with how organisations in working with or coming into contact with children ensure that they have a regard to the safety and welfare of children in carrying out their normal functions.

Clause 11 of the Children Act 2004 requires that there is: -

- Senior management commitment to the importance of safeguarding and promoting children's welfare;
- A clear statement of the agency's responsibilities towards children available for all staff;
- A clear line of accountability within the organisation for work on safeguarding and promoting the welfare of children;
- Service development that takes account of the need to safeguard and promote welfare and is informed, where appropriate, by the views of children and families;
- Staff training on safeguarding and promoting the welfare of children for all staff working with or (depending on the agency's primary functions) in contact with children and families;
- Safe recruitment procedures in place;
- Effective inter-agency working to safeguard and promote the welfare of children; and
- Effective Information sharing.

During 2006 Working Together to Protect Children was published. This document provided detailed guidance for LSCBs on developing the Board to include wider safeguarding responsibilities. It further explained that the LSCB business plan should include work concerned with protection, proactive targeted work and prevention. It included detailed guidance about the content of safeguarding and child protection policies and procedures and identified new areas of work for the LSCB including the development of Child Death Review Panels and rapid response systems where a child has died.

Statement of Values

The member agencies of the East Sussex Local Safeguarding Children Board believe that all children living in or visiting the County have the right to: -

- Safety and security in a culture of high expectation, which provides protection from harm and exploitation and enables them to develop healthily to meet their full physical, intellectual and emotional potential.

In order for this to be realistic all member agencies are working to the standards within the Children Act 2004 to ensure that:-

- All those who work with children and young people know what to do if they are worried about possible harm.
- When concerns are reported, action is taken quickly and sensitively to help children and their families.
- Agencies that provide children and young people with services take steps to ensure they are safe and are comply with legal requirements.

The role and scope of the LSCB in East Sussex

The three principal areas of activity that LSCB's are responsible for is outlined within statutory guidance as:

- Activity that affects all children and aims to prevent maltreatment, or impairment of health or development, and ensures children are growing up in circumstances consistent with safe and effective care.
- Proactive work that aims to target particular groups. For example: developing/evaluating thresholds and procedures for work with families whose child has been identified as 'in need' under the Children Act 1989, but where the child is not suffering or at risk of suffering significant harm and work to safeguard and promote the welfare of groups of children who are potentially more vulnerable than the general population.
- Responsive work to protect children who are suffering or at risk of suffering maltreatment.

The LSCB's relationship with wider arrangements to improve outcomes for Children.

In East Sussex the LSCB is part of the wider Children's Trust which has the aim of improving the overall well-being (i.e. the five Every Child Matters outcomes) of all children in the local area. Whilst the work of the LSCB contributes to the wider goals of improving the wellbeing of all children, it has a particular responsibility for areas of safeguarding activity and will need to ensure the effectiveness of this work.

The Director of Children's Services together with the Children's Trust have overall responsibility for the delivery of the five key outcomes of *Every Child Matters*. Whereas the Children's Trust has a wider role in planning and delivering services the LSCB objectives are about co-ordinating and ensuring the effectiveness of what its member organisations do individually and together. The LSCB will contribute to delivery and commissioning through the children and young people's plan and the Children's Trust arrangements.

The LSCB has the responsibility of ensuring the effectiveness and co-ordination of the safeguarding system. The delivery of the safeguarding system however remains the responsibility of the individual agencies and the Children's Trust.

The LSCB provides a scrutiny function for the Children's Trust in the area of safeguarding, and is responsible for producing and reviewing procedures, promoting training and carrying out audit and performance monitoring in the area of safeguarding and child protection.

These activities contribute to the Children's Trust's strategy for children and families and to the Children and Young People's Plan and relevant Local Area Agreements. The Chair of the East Sussex LSCB provides regular reports to the Children's Trust Executive Group.

The East Sussex LSCB has an authoritative and independent voice working within the Children's Trust. The East Sussex LSCB may raise performance issues regarding children's safeguarding directly with partner agencies and the Children's Trust. The East Sussex LSCB may seek independent advice, where appropriate, from external bodies and inspectorates.

The key priorities of the East Sussex LSCB are:

- To ensure that children within East Sussex are protected from harm.
- To co-ordinate agencies' activity to safeguard and promote the welfare of children.
- To ensure the effectiveness of agencies' activity to safeguard and promote the welfare of children through monitoring and review.

The major functions of the East Sussex LSCB are:

- To ensure the co-ordination of child protection activity in East Sussex.
- To evaluate safeguarding activity within East Sussex.
- To provide a scrutiny function for the Children's Trust in the area of safeguarding.
- To produce and review procedures in relation to safeguarding.
- To ensure multi-agency training on safeguarding and promoting welfare is provided which meets local needs.
- To conduct audit and performance monitoring of safeguarding activity.
- To raise public and professional awareness of safeguarding issues.
- To contribute, through its role in monitoring and promoting safeguarding, to the planning of services for children in East Sussex.
- To carry out serious case reviews where abuse or neglect is known or suspected.
- To collect and analyse data on all child deaths within East Sussex.
- To develop procedures to respond to unexpected child deaths in East Sussex.
- To ensure that the wishes and feelings of children and young people and their families are considered in the delivery of safeguarding services.

Work of the Local safeguarding Children Board 2006-7

This section provides a brief summary of the main aspects of the LSCB's work during this period. During the year the LSCB has had a high level of commitment from both individual representatives and the agencies they represent. This has been against a backdrop of significant change at a local and national level. During 2006/7 the LSCB worked hard to achieve continued development and maintenance of best practice through its programmes of developing procedures, training, auditing work and encouraging communication and collaboration between agencies and professional groups.

In April 2006 the LSCB set itself a challenging series of objectives which were contained in the Business Plan. Set out below is a summary of progress made: -

Ensure the establishment of an effective functioning Local Safeguarding Children Board.

All the sub-groups of the Board reviewed their membership and terms of reference and developed work programmes during 2006/7.

In 2006 the LSCB Audit group developed an audit tool for all partners within the LSCB to audit and review their services against the standards determined in Section 11 of the Children Act 2004. Returns from this audit have been received from nearly all LSCB member agencies and a report on the outcomes of the audit will be presented to LSCB Board.

A key safeguarding issue is the safe recruitment of staff with effective arrangements in place for managing allegations of abuse by employees. There has been significant work undertaken during 2006/7 to strengthen these systems. The Local Authority had appointed a LADO during 2006 who had worked closely with schools and the CSD to ensure that safe recruitment systems were in place and that allegations against staff were managed appropriately. The LSCB had a presentation from the GOSE Allegations Management Advisor on this topic area at the January Board meeting and all LSCB agencies have identified senior managers and designated officers in their organisations.

Ensure that there is effective learning from the Serious Case Review completed in 2005/6.

Throughout the year there was regular review of action plans by the LSCB steering group and the LSCB training programme was amended to reflect findings from the serious case reviews. In 2006/7 there were no serious case reviews undertaken by the LSCB however the Audit Group met twice as a Serious Case Review Panel and recommended to the LSCB Chair that Multi-Agency reviews were undertaken. These reviews were both completed during 2006/7 and their action plans will be reviewed in 2007/8. Some of the learning from these reviews has been incorporated into the training plan for 2007/8. One recommendation from a serious case review was to develop a protocol for reviewing the risk posed by alleged perpetrators when they do not have immediate contact with children and there is no prosecution. This has been fully discussed at both liaison groups and an outline process agreed. This will now be incorporated into a Sussex-wide protocol being developed in response to another serious case review in Brighton & Hove and will be included in the work programme for the Pan-Sussex procedures group

Improved community awareness of child safety and responsibilities for assisting to protect children.

During 2006 a child safety sub-group was established and a consultant recruited to review arrangements for child safety in the community. The findings of this review will

be presented to the May LSCB Board meeting and the child safety action plan will be incorporated into the business plan for 2007/8.

To ensure that the wishes and feelings of children and young people are considered in the delivery of safeguarding services.

Leaflets and consultation tools for children and young people who have child protection plans were developed in 2006/7 by young people supported by Xpress Advocacy. A pilot Child Protection advocacy service is being developed as part of the Looked After Children scheme from 1/4/07 with the intention of having a full service in place from April 2008.

Fewer children suffering from neglect or abuse.

Barnardos have undertaken a review of inter-agency systems regarding young people at risk from prostitution, missing from home and involved in substance misuse across Sussex. This review has just been completed and will be presented to the LSCB in September 2007 with an action plan to respond to its key findings. A Sussex-wide launch conference is being organised for September 2007.

During 2006 there has been continued consultation about ensuring that processes are in place so that applications under the Licensing Act 2003 and Gambling Act 2005 are appropriately scrutinised. As part of the child safety action plan consideration is being given to encouraging safer licensee standards and District and Borough councils are being asked to act as appropriate authorities on behalf of the LSCB.

The Audit group intended to undertake an audit of social care & police files to review whether all referrals involving a criminal offence were being referred to the police however the social care ICS database is not able to extract this data until September 2007 so this audit was postponed to spring 2008.

In 2006 the Audit group spent a significant time establishing systems for reviewing and investigating child deaths, in accordance with Government guidance. This involved consultation with a variety of professionals and organisations such as the Coroner and registrars and some analysis of data on child deaths within East Sussex. The Child Death Review Panel has been established and the first meeting took place in April 2007. A dataset for the collection of information on child deaths has been agreed and terms of reference and a leaflet for parents developed. East Sussex CDRP has been chosen to be one of 8 pilot panels that are being reviewed nationally to inform the development of panels across the country.

During 2006 inter-agency Private Fostering arrangements were established and were reviewed in spring 2007. This review will be considered by the Audit Group in May 2007.

Maintaining and improving the quality of inter-agency child protection interventions

During 2006/7 the LSCB Training sub-group developed and delivered an effective programme of Inter-agency child protection training. They also worked closely with the team implementing CAF to deliver good quality tier 1 safeguarding training that included appropriate reference to safeguarding and child protection procedures and processes.

In 2006 police and health colleagues developed consistent Sussex-wide arrangements for conducting forensic child protection medicals using colposcopes for sexual abuse allegations. As a result of this work protocols have been agreed in principle and resources are being identified to achieve a manageable rota.

To ensure a uniform approach to safeguarding and consistency of practice across Sussex.

Health colleagues in 2006/7 also worked together to ensure provisions for notification of children by Health Trusts under sections 85 and 86 of the Children Act 1989 were in place. They have developed a protocol with the local Hospital Trust that will be finalised in April 2007.

A major piece of work that was undertaken by the Pan-Sussex procedures group was to review draft child protection policies and procedures to ensure that they match the new requirements of Working Together 2006. The new Child Protection and Safeguarding procedures were published in October 2006 with a go live date of 4-12-06. The training Sub-group organised briefings on the new procedures and over 1000 staff have been trained across agencies with a final briefing session held April 2007. During 2006/7 police and health colleagues have worked together to develop consistent Sussex-wide arrangements for conducting forensic child protection medicals. Protocols have been agreed in principle and resources are being identified to achieve a manageable rota. Health colleagues within East Sussex continue to provide excellent out-of hours cover for this work despite significant resource pressures.

DRAFT

LSCB Business Plan 2007/8

LSCB Objectives	Output	Lead Responsibility	Timescales	Outcomes
Maintain an effective functioning Local Safeguarding Children Board	Ensure that all the sub-groups of the LSCB contribute fully to the LSCB Business Plan.	LSCB Steering Group	Ongoing through 2007/8	The board and relevant sub-groups continue to functioning effectively
Ensure that there is effective learning from the reviews completed in 2006/7	LSCB to regularly review the action plans arising from the Multi-Agency Reviews	LSCB Steering Group	Ongoing through 2007/8	Improved child protection processes in place
Fewer children suffering from neglect or abuse	Police and Social care to lead a short-life working group to review the use of the protocol regarding children missing from care and to develop a protocol of inter-agency response to all children who go missing	LSCB Steering Group –	December 2007	Protocols in place clear responses by all agencies to children who go missing
To ensure that the wishes and feelings of children and young people are considered in the delivery of safeguarding services.	To put in place arrangements to ascertain the wishes and feelings of children (including children who might not be ordinarily heard) about the priorities and effectiveness of local safeguarding work.	LSCB Steering Group	March 2008	Consultation and advocacy systems established
Fewer children suffering from neglect or abuse	To implement any recommendations stemming from the Barnardos review of inter-agency systems regarding young people at risk from prostitution, missing from home and involved in substance misuse	LSCB Steering Group	December 2007	Procedures and policies adapted.
Fewer children suffering from neglect or abuse	All partners within the LSCB implement changes required as a result of the audit against the standards determined in Section 11 of the Children Act 2004.	LSCB Audit group	By March 2008	All statutory agencies meeting the minimum standards defined in the Children Act 2004

LSCB Objectives	Output	Lead Responsibility	Timescales	Outcomes
Fewer children suffering from neglect or abuse	Audit Group to receive the review of private fostering services and to determine the nature of any further audit that is required.	LSCB Audit Group	September 2007	Confidence that Private fostering arrangements fully safeguard children
Fewer children suffering from neglect or abuse	To undertake an audit of social care & police files to review whether all referrals involving a criminal offence were being referred to the police	LSCB Audit Group	March 2008	Practice is in accordance with Working Together and Bichard Audit recommendations
Fewer children suffering from neglect or abuse	Further develop the Child Death Review Panel processes joining with Brighton and Hove LSCB by 2008 if appropriate.	LSCB Audit Group	March 2008	Child Death Overview Panel established and appropriately resourced – systems in place to review all deaths from April 2008
Fewer children suffering from neglect or abuse	To undertake a matching Needs and services audit regarding responses to children where neglect is a feature. This audit to identify where domestic violence, substance misuse and mental health are factors	LSCB Audit Group	October 2007	Better understanding of the responses provided to children in neglectful families and a greater understanding of the role of domestic violence, substance misuse and mental health.
Maintaining and improving the quality of inter-agency child protection interventions	Develop and deliver an agreed programme of Inter-agency child protection training.	LSCB Training Group	Complete by March 08	Design, deliver and evaluate the 2007/08 Training and Development Plan.
Improved community awareness of child safety and their responsibilities for assisting to protect children.	LSCB to Implement the Child Safety Action plan leading from the review of child safety arrangements	LSCB Child safety Group	Complete by March 2008	Improved community safety arrangements for children and young people
Maintaining and improving the quality of inter-agency child protection interventions	The LSCB to ensure that the role of refuges in protecting children from harm is clear to all relevant personnel.	LSCB Steering Group	Complete by March 08	Refuges within East Sussex acting in accordance with local policies and procedures

LSCB Objectives	Output	Lead Responsibility	Timescales	Outcomes
Maintaining and improving the quality of inter-agency child protection interventions	The LSCB to ensure that there are positive working relationships between Refuges and statutory agencies within their area.	LSCB Steering Group	March 08	LSCB to be confident that Refuges are appropriately engaged in the safeguarding process and that their staff have relevant training.
Better support for children and young people who have witnessed domestic violence	To review current inter-agency processes in place to intervene to prevent domestic violence adversely affecting children. Better information sharing around domestic violence.	Sussex Police & CPLGs	March 2008	New protocols in place regarding inter-agency responses to domestic violence. Improved information sharing between police and other agencies regarding domestic violence
Improve skills for professionals addressing disabled children's sexuality	Prepare and present 1 day multi-agency course working with disabled children, emerging sexuality.	LSCB Disabled children's group	October 2007	Increased understanding by all agencies of the complexity of the issue
Improve safeguarding and raise awareness of risk to disabled children for support workers	Prepare and present 'Disabled Children and Safeguarding Course' specific to role of outreach and sessional workers	LSCB Disabled children's group	October 2007	Staff better able to manage the risks
Improve quality of communication during ABE interviews with disabled children	Work with the police to improve the involvement of Disabled children in the ABE interview process building on the success of the ABE interview project	LSCB Disabled children's group	October 2007	Disabled children being protected to the same standard as other children
To ensure a uniform approach to safeguarding and consistency of practice across Sussex.	Undertake a review of use of Safeguarding procedures to confirm that they are being used and that they meet operational staff requirements	Pan-Sussex procedures sub-group	December 2007	Staff are enabled to undertake safeguarding work effectively

LSCB Objectives	Output	Lead Responsibility	Timescales	Outcomes
Reduce injuries to children (LAA Target)		ESFRS	By 2008/9	By 2008/9 the number of children admitted to A&E in Eastbourne and Hastings will reduce to 1576
Reduce the incidence of bullying experienced by children and young people, including cases of racial harassment (LAA Target)		Children's Services Department ESCC	By 2006/7	Number of schools completing incidence reports – 40% by 2006/7 Number of reported incidence of bullying which stop following effective intervention – targets to be set Number of requests for school transfers citing bullying – 20% reduction during 2006/7
Reduce the number of young people who are victims of crime. (LAA Target)		Eastbourne CDRP	By 2008/09	10% reduction by 2008/09 of victims between the ages of 10-19yrs (346 less victims)

Appendix 1 ACPC Audit Sub-group Annual Report of Core Data 2006-2007

This annual report includes mainly data for the period ending 31/3/06 as national data on performance for year ending 31/3/07 is not available until spring 2008. In some areas where it is possible more recent data has been included.

A comparison of East Sussex child protection statistics with national data for year ending 31/3/2006

On 31/3/06 there were 2.68 children on the child protection register per 1000 of the population aged 0-17 within East Sussex which was above the national rate of 2.53 children per 1000. It is noteworthy that the figure for 31/3/07 has increased to 3.55. The proportion of children with child protection plans for emotional abuse remained very high at 45% within East Sussex compared to the national rate of 21%. The proportion with child protection plans for neglect decreased to 43 % which is the same as the national rate. The percentage with child protection plans for physical abuse was 10% while the national rate was 16% and for sexual abuse was 2% compared to the national figure of 8%.

As of 31/3/07 there has been an increase in child protection plans for sexual abuse to 6%, a slight decrease in child protection plans for emotional abuse to 44% and a further drop in child protection plans for neglect to 39%, while child protection plans associated with physical abuse are similar at 11%.

The age distribution of children with child protection plans in East Sussex continues to be very similar to the national pattern. The proportion of children under 1 with a child protection plan in East Sussex is higher than the national figure (14% compared with 12%) and the proportion of 10-15 year olds with child protection plans also remains below the national average (26% compared with 28%).

Key performance indicators for year ending 31/3/2007

East Sussex continues to perform well on all key performance indicators in 2006/7 achieving good or excellent in all categories:-

100% of reviews were held on time in 2006/7 compared to 99% nationally in 2005/6. The number of children who were de-registered after their names had been on the register for over two years has increased slightly to 6.6% in 2006/7 compared with a national average of 6.5% in 2005/6.

Re-registrations on the CPR reduced to 11.4% locally, compared with the national figure of 14%. Performance on this indicator deteriorated in 2005/6 and a review of the causes of re-registrations indicated a need for greater caution where the major family factors leading to re-registrations were the long-term influences on families of substance misuse, mental health difficulties and domestic violence. Child Protection Advisors exercised greater caution when considering ceasing child protection plans where these factors were relevant particularly if the child protection plan had been in place for less than one year. This may have resulted in the slight increase in the numbers of child protection plans ceasing after two years and this area will need to be kept under review in 2007/8.

Social Care data for the year ending 31/3/06 (national data is in brackets)

Out of a total of 3,869 (569,300) referrals to Social Care 839 or 22% (132,500, 23%) were repeat referrals that previously had been made within the last year. There were 3,350 (300,200) initial assessments undertaken that is 87% (53%) of total referrals, of which 2,346 or 70% (194,900, 65%) were completed within seven days. Of the 1,756 (84,800) core assessments undertaken in the year 1,499 or 85% (63,100, 74%) were completed within 35 days.

Health data for year ending 31st March 2007

Paediatricians working for East Sussex Hospitals NHS Trust performed 79 child protection medicals; 38 of these took place at Eastbourne District General Hospital and 41 were undertaken at the Conquest Hospital. This represents an increase of 16% compared with the number of medicals carried out during the previous year. This increase is entirely explained by an increase in activity with respect to welfare medicals. The number of physical abuse medicals has increased marginally with a slight fall in the number of CSA medicals.

The breakdown of these medicals was as follows:

	Physical Abuse	Sexual Abuse	Welfare Neglect/emotional abuse	Totals
Eastbourne DGH	7	7	24	38
Conquest	26	5	10	41
TOTALS	33	12	34	79

Joint Examinations

All except two of the CSA medicals were carried out by 2 paediatricians. The medicals which were carried out by a single paediatrician took place out of hours. One of these examinations was set up jointly with a police forensic medical examiner. However the medical was actually carried out by a female paediatrician assisted by a female forensic nurse practitioner as the forensic medical examiner was male and the child declined to be seen by a male doctor.

Out of Hours Examinations

Two of the CSA medicals were conducted out of hours as discussed above. The majority of the physical abuse medicals were conducted during working hours but information is not currently collated regarding the timing of physical abuse medicals and therefore further breakdown of these figures is not possible. All of the welfare medicals took place within normal working hours.

An out of hours rota was established from 1st January 2007 for child sexual abuse medicals. This rota covers East Sussex, Brighton and Hove and Mid Sussex and provides cover from 9am – 5pm for weekends and Bank Holidays. Urgent physical abuse medicals are carried out by the acute paediatrician on call as required.

Police Data for 1/4/06 - 31/3/07

Battle. There were no recorded repeat Section 47 investigations during the relevant period. 41 police protections were recorded (a significant increase from 27 last year), of which 0 were repeat police protections. The detection rate for child abuse crimes was 42.6% (a significant increase from 24.8% last year).

Eastbourne.

There were no recorded repeat Section 47 investigations during the relevant period. 42 police protections were recorded, of which 0 were repeat police protections. The detection rate for child abuse crimes was 38.3% (also a significant increase from 27.4% in 2005/6).

NSPCC Data

In East Sussex the NSPCC have a service based in the Silverhill area of St Leonard's which provides a range of counselling, advisory and advocacy service for vulnerable and 'at risk' children and young people.

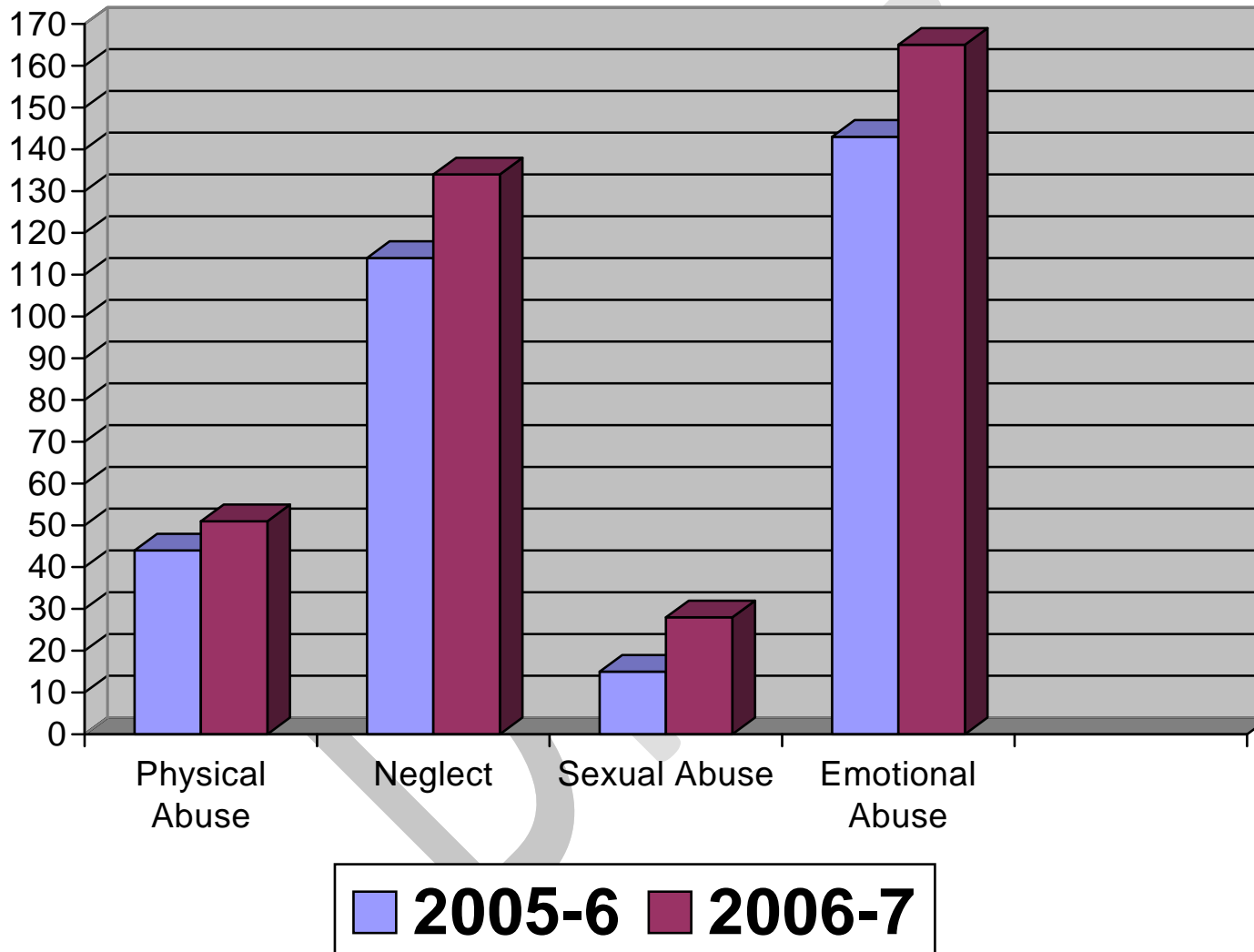
The team covers the Hastings and Rother area of East Sussex and the nature of services and model of delivery is: -

- On site counselling at 9 local schools (primary and secondary).
- Lunchtime walk-in facilities at a number of schools.
- Peer support/mentoring scheme at two secondary schools and developing at one primary school.
- Office based counselling, advice and advocacy, and other therapy for children, young people (and their friends and family) both self and assisted referral.
- Solution Talk (solution focussed service for children, young people and their friends and family). Self and assisted referral.
- Community based evening walk-in service at FSN - range of activity, individual and group methods of engaging young people at risk.
- Group work with excluded/at risk young people
- Young People's Advisory Group YPAG

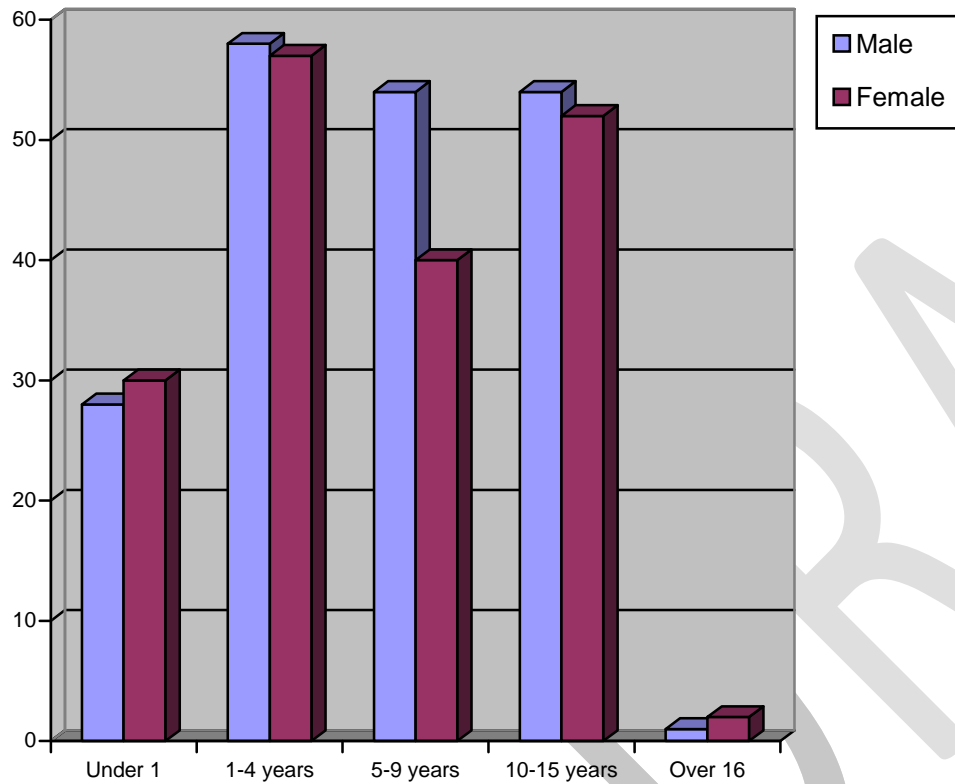
Nationally the NSPCC provides a 24 hour National Child Protection Helpline (0800 800 500) About 13% of calls received relate to children at serious risk of harm, and these result in referrals to the appropriate child protection agencies for further investigation.

Analysis of Number of Registrations During the Years Ending 31st March 2006 and 31st March 2007

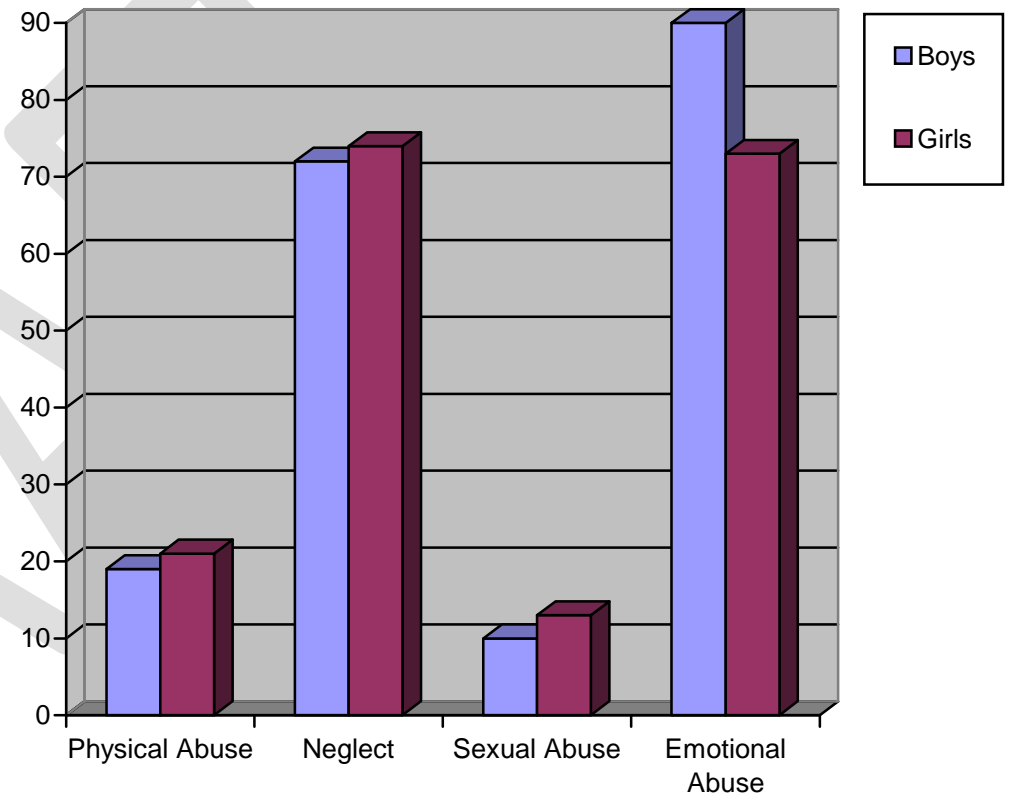
Number of Registrations: 316 and 378



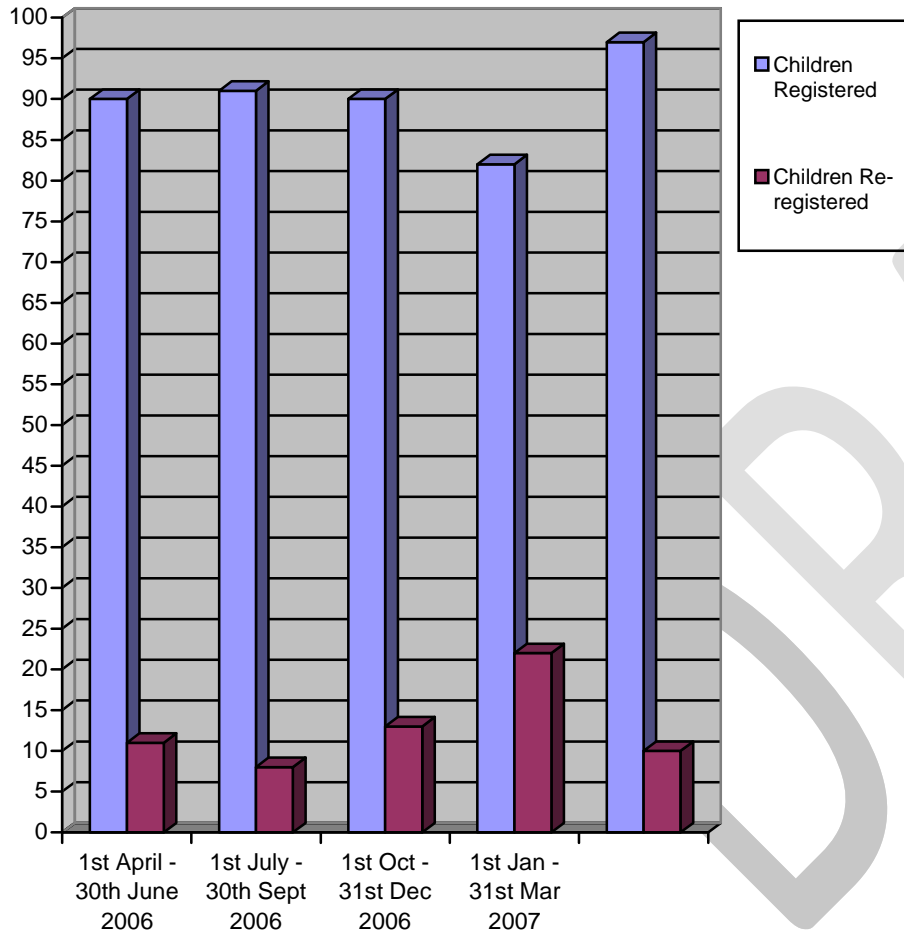
**Analysis by Gender & Age Group - Number on Register
@ 31.03.2007 - 372**



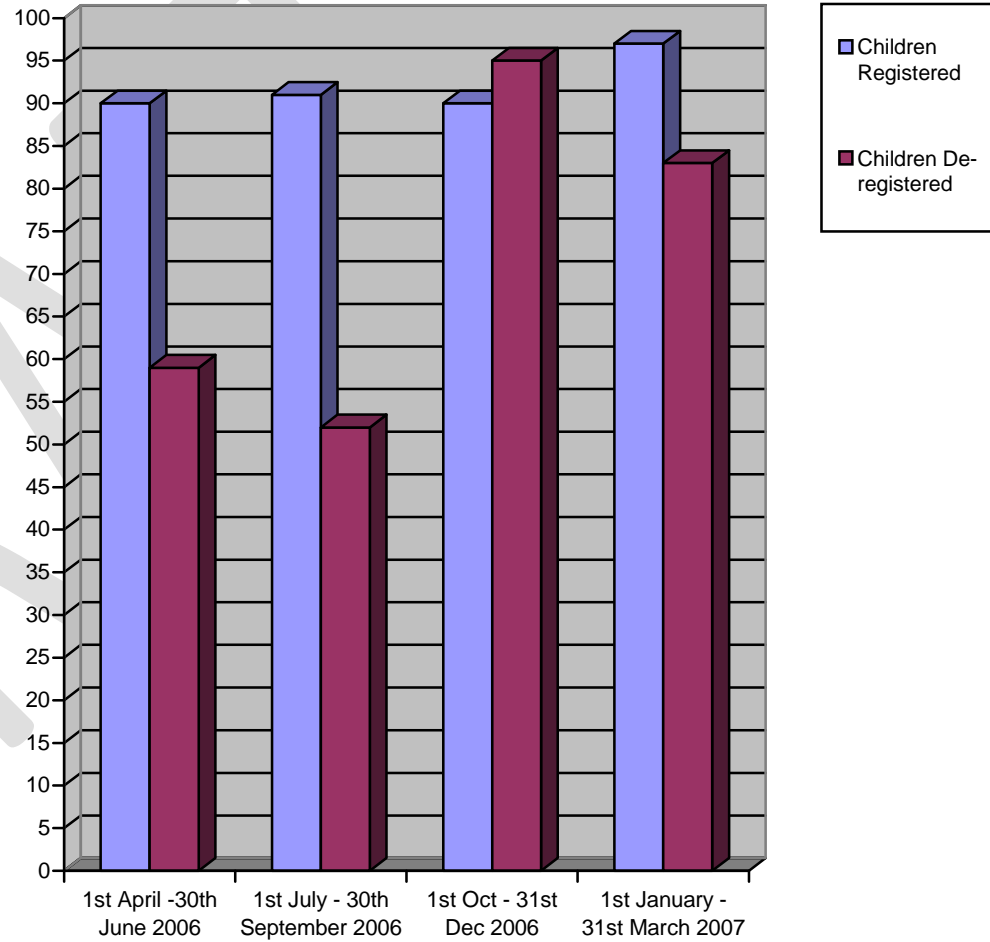
**Child Protection Activity - Analysis by Category & Gender -
Number on Register @ 31.03.2007 - 372**



Analysis of registrations and re-registrations by quarter for year ending 2006/7



Analysis of Registrations & De-Registrations by Quarter for year ending 2006/7



Review of LSCB Training Plan for 2006/7

TRAINING TARGETS	ACHIEVEMENTS	OUTCOMES	EVALUATION FEEDBACK 2005/06
<p>Assessing Risk, Analysis and Decision Making</p> <p>Aims: To explore decision making and consider models for risk assessments when working within Child Protection</p>	<p>2 x 2 day courses.</p> <p>36 attended.</p>	<p>Participants were able to build on existing assessment and learn about current research and theories which underpin good practice. As a multi-agency group they could explore their roles and responsibilities within the Assessment Framework (2000) and look at evidence based practice to achieve good outcomes for children.</p> <p>2 day course</p> <p>89% Agreed course met development needs.</p>	<p>Please refer to key on the last page</p> <p>1 day course</p> <p>ASS – 0 CSSC – 14 CSEd – 1 CSEdS – 6 H – 15 HS – 0 POL – 0 PROB – 0 SubM – 0 YOT – 0 Oth – 0</p>
<p>Assessing Risk in First Time Parents</p> <p>Aims: To develop an advanced level of competence in assessing complex risk in first time parents.</p>	<p>1 x 1 day course</p> <p>18 attended</p>	<p>Participants were able to develop understanding of the legal mandate and statutory framework, roles and responsibilities. They were able to gain greater understanding of health perspectives regarding maternal issues in pregnancy and pool delivery.</p> <p>Feedback Received</p> <p>72% Agreed course met development needs.</p>	<p>ASS – 0 CSSC – 3 CSEd – 0 CSEdS – 1 H – 11 HS – 0 POL – 0 PROB – 0 SubM – 2 YOT – 0 Oth -1</p>
<p>Domestic Violence and Its Impact on Children</p> <p>Aims: To enable participants to gain an understanding of the emotional,</p>	<p>3 x 1 day courses 1 x 2 day courses</p> <p>80 attended</p>	<p>Participants were able to explore how Domestic Violence affects the lives of children and their families through use of current research. They were given up to date information about current policies, local initiatives and resources.</p> <p>Feedback Received:</p>	<p>ASS – 0 CSSC – 27 CSEd – 5 CSEdS – 8 H – 23 HS – 1</p>

TRAINING TARGETS	ACHIEVEMENTS	OUTCOMES	EVALUATION FEEDBACK 2005/06
psychological and physical consequences for children who witness Domestic Violence.		85% Agreed course met development needs.	POL – 0 PROB – 3 SubM – 2 YOT – 4 Oth - 7
<p>Child Protection In a Multi-Agency Context</p> <p>Aims: To enable participants to gain a greater understanding of their agency role and that of all other agencies regarding Child Protection</p>	<p>3 x 1 day course</p> <p>53 attended</p>	<p>Participants were able to gain a greater understanding about the structure and role of the key agencies involved in Child Protection.</p> <p>They learned about both single and multi-agency dimensions to the whole Child Protection Process.</p> <p>Feedback Received:</p> <p>87% Agreed course met development needs.</p>	<p>ASS – 2 CSSC – 17 CSEd – 1 CSEdS – 4 H – 15 HS – 0 POL – 0 PROB – 7 SubM – 0 YOT – 0 Oth – 7</p>
<p>Parental Substance and Alcohol Misuse and The Impact on Children</p> <p>Aims: To explore inter-agency roles and responsibilities when assessing and managing risk to children whose parents misuse alcohol and substances.</p>	<p>1 x 1 day course 1 x 2 day course</p> <p>46 attended</p>	<p>Participants explored ways of identifying risk to children and examined thresholds relating to risk in an interagency context. They were able to reflect on current research and local government initiatives and explore effective interventions.</p> <p>Feedback Received:</p> <p>82% Agreed course met development needs.</p>	<p>ASS – 0 CSSC – 20 CSEd – 0 CSEdS – 0 H – 12 HS – 0 POL – 1 PROB – 0 SubM – 6 YOT – 3 Oth – 4</p>
<p>Parents with Learning Difficulties – Developing Good Practice whilst Managing Risk</p> <p>Aims:</p>	<p>2 x 1 day course</p> <p>22 attended</p>	<p>Practitioners explored the term ‘Learning Disability’ and positive and negative experiences of inter-agency practice. They looked at notions of risk, resilience and competence surrounding parents with Learning Disabilities.</p>	<p>ASS – 0 CSSC – 11 CSEd – 0 CSEdS – 0 H – 8 HS – 0</p>

TRAINING TARGETS	ACHIEVEMENTS	OUTCOMES	EVALUATION FEEDBACK 2005/06
To use research and local inter-agency practice to identify risk to children whose parents have learning difficulties.		Feedback Received: 64% Agreed course met development needs.	POL – 0 PROB – 0 SubM – 5 YOT – 2 Oth – 4
The Impact of Parental Mental Health on Child Welfare Aims: To use research and local inter-agency practice to identify risk to children whose parents have mental health problems.	2 x 1 day course. 1 cancelled due to trainer unavailability. 42 attended	Participants were able to share and discuss good practice and think about ways to improve inter-agency communication. They looked at thresholds relating to Mental Health and risk Feedback Received: 64% Agreed course met development needs.	ASS – 1 CSSC – 18 CSEd – 3 CSEdS – 1 H – 17 HS – 0 POL – 0 PROB – 0 SubM – 0 YOT – 1 Oth – 1
Teenage Sexuality, Pregnancy and Parenting Aims: To develop an advanced understanding of issues and dilemmas in young people's decisions regarding sexual behaviour and pregnancy with implications for the assessment of teenage parents.	2 x 1 day courses cancelled due to withdrawal of Practice Development Workers from LSCB training 'pool'		
Emotional Abuse and Neglect: Thresholds for Intervention and Outcomes for Children. Aims: To enable participants to explore the concept of emotional abuse and	1 x 2 day course 22 attended	Participants will be able to identify categories/types of emotional abuse and neglect and to analyse information to lead to an informed assessment of risk. They will be able to establish consistent thresholds for intervention and to identify positive outcomes for children.	ASS – 0 CSSC – 14 CSEd – 2 CSEdS – 0 H – 4 HS – 0 POL – 0

TRAINING TARGETS	ACHIEVEMENTS	OUTCOMES	EVALUATION FEEDBACK 2005/06
neglect through practice and research examples in an inter-agency training context.		100% Agreed course met development needs.	PROB – 0 SubM – 0 YOT – 2 Oth – 0
<p>Participating in the Child Protection Conference Process</p> <p>Aims: To explore the purpose and function of Child Protection Conferences and to provide participants with an understanding of their statutory function in relation to preparation and attendance at such meetings.</p>	<p>1 x 1 day course planned. 2 ran due to demand.</p> <p>31 attended</p>	<p>Participants were given the opportunity to familiarise themselves with the processes of Child Protection Conferences and similar meetings. They were provided with an understanding of the requirements of their professional roles.</p> <p>Feedback Received:</p> <p>97% Agreed course met development needs.</p>	<p>ASS – 0 CSSC – 9 CSEd – 4 CSEdS – 0 H – 4 HS – 0 POL – 3 PROB – 8 SubM – 2 YOT – 0 Oth – 1</p>
<p>Understanding Mental Health</p> <p>Aims: To give staff a basic understanding of common mental health.</p>	<p>3 courses planned only 1 course ran due to Mental Health trainer vacancy.</p> <p>18 attended</p>	<p>Participants were able to identify some of the symptoms, causes and treatments of mental health. They gained knowledge about the general and more specific effects of mental illness on parenting ability and child protection.</p> <p>Feedback received:</p> <p>94% Agreed course met development needs.</p>	<p>ASS – 0 CSSC – 6 CSEd – 1 CSEdS – 1 H – 7 HS – 0 POL – 0 PROB – 0 SubM – 0 YOT – 1 Oth – 2</p>
<p>Working together in Core Groups</p> <p>Aims: To facilitate local networking</p>	<p>1 x 1 day course.</p> <p>27 attended.</p>	<p>Participants will learn about the purpose and function of core groups and how to develop Child Protection Plans. They will look at theories about Group Dynamics and what problems might arise during inter-agency workings.</p>	<p>ASS – 0 CSSC – 7 CSEd – 0 CSEdS – 0 H – 12 HS – 2</p>

TRAINING TARGETS	ACHIEVEMENTS	OUTCOMES	EVALUATION FEEDBACK 2005/06
between professionals who are likely to work together in core groups.		Feedback received: . 96% Agreed course met development needs.	POL – 0 PROB – 3 SubM – 2 YOT – 0 Oth – 1
Basic Child Protection Awareness Training Aims: To provide a variety of staff from Eastbourne Borough Council with knowledge and understanding of Child Protection and Child Abuse Issues.	1 x 1 day course. 26 staff attended from across a variety of EBC services	Participants were able to negotiate indicators to show a child needs help. They were enabled to be clear about action to be taken if they had concerns about a child. They were informed about the Child Protection Procedures and how to make an effective referral to Social Services. Feedback received: 95% Agreed course met development needs.	ASS – 0 CSSC – 0 CSEd – 0 CSEdS – 0 H – 0 HS – 0 POL – 0 PROB – 0 SubM – 0 YOT – 0 Oth – 26
Basic Child Protection Awareness Training Aims: To provide a variety of staff with knowledge and understanding of Child Protection and Child Abuse Issues.	3 x half day courses for staff from a variety of non-statutory voluntary/private/independent sectors. Pre-school providers, Community/Leisure groups. 2 x 1 day courses ran due to course re-focusing. 40 attended	Participants were able to identify and respond to child protection concerns. They learned about current procedures and how to communicate effectively in an inter agency context. Feedback received: 95% Agreed course met development needs.	ASS – 0 CSSC – 0 CSEd – 0 CSEdS – 0 H – 0 HS – 0 POL – 0 PROB – 0 SubM – 0 YOT – 0 Oth – 40

TRAINING TARGETS	ACHIEVEMENTS	OUTCOMES	EVALUATION FEEDBACK 2005/06
<p>Child Protection – Introduction to Joint Investigations</p> <p>Aims: Joint Police and Social Services Department training on Investigation Skills in cases of Alleged Abuse – Level One</p>	<p>1 x 1 day course</p> <p>16 attended from Children’s Services Social Care.</p>	<p>Participants increased their knowledge skills in working with other agencies during Joint Investigations around Child Abuse.</p> <p>100% Agreed course met development needs.</p>	<p>ASS – 0 CSSC – 16 CSEd – 0 CSEdS – 0 H – 0 HS – 0 POL – 0 PROB – 0 SubM – 0 YOT – 0 Oth – 0</p>
<p>Child Protection – Joint Investigations & Achieving Best Evidence</p> <p>Joint Police and Social Services Department training on Interviewing Children under MOGP (becoming Achieving Best Evidence) guidelines.</p>	<p>1 x 8 day course</p> <p>12 staff attended</p>	<p>Participants were able to share respective agency experiences and knowledge of the Joint Investigation process and plan and observe video Achieving Best Evidence Interviews.</p> <p>100% Agreed course met development needs.</p>	<p>ASS – 0 CSSC – 6 CSEd – 0 CSEdS – 0 H – 0 HS – 0 POL – 6 PROB – 0 SubM – 0 YOT – 0 Oth – 0</p>
<p>Child Protection Awareness for the witness support service</p> <p>Aims: To provide a variety of staff with knowledge and understanding of Child Protection and Child Abuse Issues.</p>	<p>1 x half day courses</p> <p>20 staff attended</p>	<p>Participants gained awareness of signs and symptoms of Child Abuse, how to respond and make a referral.</p> <p>98% Agreed course met development needs.</p>	<p>ASS – 0 CSSC – 0 CSEd – 0 CSEdS – 0 H – 0 HS – 0 POL – 0 PROB – 0 SubM – 0 YOT – 0 Oth – 20</p>

TRAINING TARGETS	ACHIEVEMENTS	OUTCOMES	EVALUATION FEEDBACK 2005/06
Launch of LSCB Child Protection Procedures for a multi-agency Audience	7 x 2 hour briefing 464 staff attended.	The audience were able to gain an overview of the structure and content of the new Child Protection Procedures	No Evaluations given out
Joint Investigation Practice Review Days.	3 x 1 day conferences. 130 staff from police and social care.	Participants gained an update about Good Practice and techniques when Achieving Best Evidence LSCB Procedure; Interviewing Disabled Children. Participants also had input from Barristers regarding court perspectives on the quality of video interviewed and heard research regarding police and social workers experience of joint investigations. 95% Agreed course met development needs.	
Achieving a Shared Understanding of Referrals	1 x 1 day course 16 attended	88% Agreed course met development needs.	ASS – 0 CSSC – 0 CSEd – 4 CSEdS – 0 H – 10 HS – 0 POL – 0 PROB – 0 SubM – 0 YOT – 0 Oth – 2
Dealing with the Impact and Aftermath of Allegations against staff	1 x 1 day course 25 attended	Participants gained knowledge of how to deal with the impact of an allegation against a colleague or themselves whilst maintaining safe professional practice. They explored ways of minimising the impact of personal and professional harm. 94% Agreed course met development needs.	ASS – 0 CSSC – 10 CSEd – 3 CSEdS – 1 H – 8 HS – 0 POL – 0 PROB – 0

TRAINING TARGETS	ACHIEVEMENT S	OUTCOMES	EVALUATION FEEDBACK 2005/06
			SubM – 0 YOT – 0 Oth – 3

KEY	
ASS – Adult Social Services	POL – Police
CSSC – Children’s Services Social Care	PROB – Probation
CSEd – Education	SubM – Substance Misuse
CSEdS – Education Schools	YOT – Youth Offending Team
H - Health	O – Other
HS – Housing	

LSCB TRAINING PLAN 2007 - 2008

Detailed in the framework below are the courses that will be made available to staff from the agencies represented by the Local Safeguarding Children's Boards. Courses will run from April 2007 to March 2008.

TRAINING PRIORITIES	TARGET GROUP	PLANNED OUTCOMES	LSCB COST	Outcome level (from Working Together Ch4)
<p>Child Protection – Introduction to Joint Investigations –</p> <p>Training on Investigation Skills in cases of Alleged Abuse for staff involved in investigations</p>	<p>Social Workers who have been qualified for 1 year. Experienced Social Workers who may require a refresher course and relevant police staff.</p> <p>1 x 1 day course Maximum 12 places per course</p>	<p>Enhance effective investigation skills, co-ordination and co-operative working between agencies in respect of joint investigations of alleged child abuse.</p>	<p>Trainer time + input from Police CPT</p>	<p>Level 3</p>
<p>Child Protection – Joint Investigations & Achieving Best Evidence</p> <p>Joint Police and SSD training on Interviewing Children under Achieving Best Evidence guidelines.</p>	<p>Experienced Social Workers who have completed introductory training (above) or who are sufficiently competent and experienced, and either working, or intend to work, within a team undertaking investigative work and relevant police staff.</p> <p>1 x 8 day course. Maximum 6 places per year.</p>	<p>Opportunity for interview planning and observation of practice interviews and participation in at least one role-played interview. Participants will be able to observe and critique videos produced by self and others.</p>	<p>Trainer time</p>	<p>Level 3</p>
<p>An Introduction to Basic Child Protection Awareness for Voluntary and Community Groups</p>	<p>Non-statutory agencies – Private/voluntary/independent sectors Pre-school providers community/leisure groups This would include any staff working directly or indirectly with children. 3 x 1 day courses 24 places. NB. Work has also been undertaken to ensure training that supports the introduction of the Common Assessment Framework (CAF) includes reference to child protection and reporting child protection concerns.</p>	<p>To raise awareness of Child Protection issues. To enable staff to identify and respond to Child Protection concerns. To make staff aware of ESCC Child Protection Procedures. To encourage and develop effective inter-agency communication where Child Protection matters arise.</p>	<p>£1,000</p>	<p>Level 1</p>
<p>Parental Substance and Alcohol Misuse and the Impact on Children.</p>	<p>Children's Services, Health, Probation & YOT staff.</p>	<p>Be aware of their own attitudes to substance and alcohol use and users and</p>	<p>£2000</p>	<p>Level 2</p>

TRAINING PRIORITIES	TARGET GROUP	PLANNED OUTCOMES	LSCB COST	Outcome level (from Working Together Ch4)
	<p>2 x 2 day courses.</p> <p>24 places</p>	<p>how this influences their practice.</p> <p>Demonstrate increased knowledge of effects, risks and potential harm of the principle substances of use/misuse and drinking patterns.</p> <p>Describe potential impact of harmful substance/alcohol use on children and families.</p> <p>Assess needs and provide a range of responses directed both at assisting parents and protecting and helping children.</p>		
Domestic Violence and the Impact on Children	<p>Children's Services and Health staff including midwives, GPs and teachers</p> <p>2 x 2 day courses.</p> <p>24 places.</p> <p>In addition to these courses work is being undertaken to develop a two day course for practitioners actively working in this field.</p>	<p>This course will enable participants to respond appropriately to domestic violence.</p> <p>They will reflect on current research on how children are affected by domestic violence.</p> <p>They will learn about current policies and local initiatives and resources.</p>	£2000	Level 2
Working Together in Core Groups	<p>Children's Services & Health staff.</p> <p>1 x 1 day courses.</p> <p>24 places</p>	<p>Participants will explore effective inter-agency working in core-groups.</p> <p>They will learn how to develop effective CP plans.</p>	£1000	Level 3
Participating in the CP Conference Process	<p>Children's Services, Health, Probation and YOT staff who attend or who are likely to attend CP conferences, reviews and similar meetings.</p> <p>2 x 1 day courses.</p> <p>24 places per course.</p>	<p>To enable participants to explore the purpose and function of Child Protection Conferences; to give participants an opportunity to familiarise themselves with the processes of Child Protection Conferences and provide them with an understanding of their professional role in relation to conferences and similar meetings.</p>	£1000	Level 3
Child Protection in a Multi-Agency Context	<p>Newly qualified or inexperienced staff from Children's Services, Health, and Police who have little or no</p>	<p>To enable participants to learn about the structure, roles and responsibilities of the statutory agencies involved in child protection.</p>	£1000	Level 1

TRAINING PRIORITIES	TARGET GROUP	PLANNED OUTCOMES	LSCB COST	Outcome level (from Working Together Ch4)
	<p>knowledge of the Child Protection Process.</p> <p>2 x 1 day courses</p> <p>24 places.</p>	<p>Participants will gain a greater understanding of the single and multi-agency approach to child protection, from initial identification to case conference and beyond.</p>		
Teenage Sexuality, Pregnancy & Parenting Assessing Risk and outcomes for parent and child	<p>Staff from Children's Services, Police, Health, Connexions PA's etc involved in assessment and support of sexually active young people.</p> <p>2 x 1 day courses</p> <p>24 places.</p>	<p>To enable staff to consider the choices available to young people regarding their sexuality and to identify factors of vulnerability and risk. Participants will learn about relevant government objectives and explore a multi-agency approach to assessment and support of young teenage parents.</p>	£1000	Level 2
Disabled Young People & Emerging Sexuality	<p>Any professional working with physically or learning disabled young people.</p> <p>1 x 1 day course</p> <p>16 places</p>	<p>Participants will explore the issues and challenges of the emerging sexuality of disabled young people approaching adulthood.</p>	£500	Level 2
Internet Abuse	<p>Children Services, Health & Police, Probation & YOT Staff</p> <p>1 x 1 day courses</p> <p>24 places</p>	<p>Participants will develop knowledge of the methods by which children & young people are targeted via the internet, the associated risks & consider safe practice guidelines.</p>	£500	Level 3
Making and receiving effective Child Protection referrals and how this links to CAF.	<p>Places shared between Children's Services and Health Staff</p> <p>2 x 1 day course</p> <p>24 places</p>	<p>Participants from a variety of agencies will explore what information is required by the receiving agency in order to make an effective referral; the thresholds and referral criteria to which each agency works in order to achieve the best outcomes for service users.</p>	£500	Level 2
Dealing with the Impact and Aftermath of Allegations against staff.	<p>Places shared between Children's Services, Adult Services and Health Staff</p> <p>1 x 1 day course</p> <p>24 places</p>	<p>Participants will look at how to deal with the impact of an allegation against a colleague or themselves whilst maintaining safe professional practice. They will also explore ways of minimising the impact of personal and professional harm.</p>	£500	Level 2

TRAINING PRIORITIES	TARGET GROUP	PLANNED OUTCOMES	LSCB COST	Outcome level (from Working Together Ch4)
Managing Allegations against staff.	Managers of staff who may be subject to allegations of inappropriate behaviour towards children 1 x 1 day course 24 places	To assist managers in their understanding and application of child protection and disciplinary procedures: and how these two procedures work together when appropriate.	£500	Level 2
Understanding Mental Health A Pathway Course: Day 1	Children's Services, Health, CLDT, Housing, Probation, YOT staff and Police 2 x 1 day course 24 places	Participants will gain a basic knowledge of common mental illnesses; symptoms and effect of mental illness; causes and treatment and the impact of adult mental illness on a child.	£1000	Level 2
The Impact of Parental Mental Health on Child Welfare. A Pathway course Days 2+3	Places shared between Adult Mental Health workers Children Services & Health staff working with families where there are adult mental health issues. Participants must complete day 1 (above) before applying for days 2 and 3. 2 x 2 day courses. 24 places	To identify risk to children whose parents have mental health problems. To facilitate inter-agency communication. To reflect on current research. To examine thresholds relating to risk.	£2000	Level 2
Parents with Learning Disabilities Developing Good Working Practice whilst Managing Risk	Staff from Adult Learning Disabilities, Children's Services & Health 2 x 1 day course 24 places	To explore inter-agency roles and responsibilities. To gain a shared understanding of the term "Learning Disability" To explore positive and negative experiences of inter-agency practice. To look at outcomes for children and families. To explore notions of risk, resilience and competence surrounding parents with learning disabilities.	£1000	Level 2
Emotional Abuse & Neglect: Thresholds for Intervention and Outcomes for Children.	Statutory Agencies – i.e. Health & Children Services staff. 1 x 2 day courses. 20 places.	To enable participants to explore the concept of neglect. To identify categories/types of neglect. To enable participants to analyse information to lead to an informed assessment of risk. To enhance inter-agency	£1,900	Level 2

TRAINING PRIORITIES	TARGET GROUP	PLANNED OUTCOMES	LSCB COST	Outcome level (from Working Together Ch4)
		communication and establish consistent thresholds for intervention. To explore current research and practice to identify positive outcomes for children.		
Unexpected Child Death Protocol	Relevant LSCB members 2 x 1 day course 24 places	TBC	£1000	Level 3
Linking MAPPA (Multi-Agency Public Protection Arrangements) with Child Protection Processes	Relevant LSCB members 6 x 2hour briefings up to 600 places	TBC	£1200	Level 3
Disabled Children: Assessing needs and managing risk	Children's Services and Health staff 1 x 1 day course 24 places	This course will explore the assessment process and identifying risk to disabled children in the context of the Assessment Framework. Participants will explore ways to develop assessment practice to achieve positive outcomes for disabled children.	£1000	Level 2
Total Cost			£ 20,600	

East Sussex Local Safeguarding Children Board Members

Matt Dunkley – Chair	ESCC: Children's Services
Helen Davies	ESCC: Children's Services
Ruth Szulecki	ESCC: Early Years
Fiona Johnson	ESCC: Head of Children's Safeguards
Angela Reid	ESCC: Legal Advisor
Bob Skinner	ESCC: Training
Penny Lavan	ESCC: Education Welfare service
Mick McGlynn	ESCC: East CPLG
Nicola McGeown	ESCC: West CPLG
John Hawkins	ESCC: Youth Offending Services
Kate Dawson	ESCC: Adult Social Care
Marcus Gomm	ESCC: Community Safety
Det Supt R. Whitfield	Sussex Police
D I Martin Sapwell	Sussex Police
DS Eddie Hick	Police Professional Advisor
Andrea Saunders	Sussex Probation Service
Alison Smith	Hastings & Rother PCT
Jayne Boyfield	East Sussex & Weald PCT
Cathy Stone	East Sussex Hospitals NHS Trust
Martin Lewis	Sussex Ambulance Service NHS Trust
Helen Greatorex	Sussex Partnership NHS Trust
Dawn Sampson	Designated Nurse,
Kevin O'Sullivan	Named Nurse,
Debbie Barnes	Named Nurse,
Dr Tracey Ward	Designated Doctor,
Dr Sarah Thomson	Designated GP,
Mary Clare Deane	Wealdon District Council
Andrew Palmer	Hastings Borough Council
Neil Fuller	Eastbourne Borough Council
Owen Clifford	Lewes District Council
Joy Cooper	Rother District Council
Dave Dowling	East Sussex Rescue & Fire Service
Lesley Young	Secondary Head Teacher
Gillian Morrow	Primary Head Teacher
Louise Carlyle	Special Education Head Teacher
Catherine Dooley	CfBT School Improvement Service
Wayne Wright	Learning Skills Council
Mark Preston	Connexions
Bridget Langford	NSPCC
Ann Flynn	CAFCAS